



User Manual

VC-C101U-ETH

USB-C to HDMI2.0 converter with USB and Ethernet

All Rights Reserved

Version: VC-C101U-ETH_HW_Rev2_2023V1.4

Preface

Read this user manual carefully before using the product. Pictures shown in this manual are for reference only. Different models and specifications are subject to real product.

This manual is only for operation instruction, please contact the local distributor for maintenance assistance. The functions described in this version were updated by November, 2023. In the constant effort to improve the product, we reserve the right to make functions or parameters changes without notice or obligation. Please refer to the dealers for the latest details.

FCC Statement

This equipment generates, uses and can radiate radio frequency energy and, if not installed and used in accordance with the instructions, may cause harmful interference to radio communications. It has been tested and found to comply with the limits for a Class B digital device, pursuant to part 15 of the FCC Rules. These limits are designed to provide reasonable protection against harmful interference in a commercial installation.

Operation of this equipment in a residential area is likely to cause interference, in which case the user at their own expense will be required to take whatever measures may be necessary to correct the interference.

Any changes or modifications not expressly approved by the manufacture would void the user's authority to operate the equipment.



SAFETY PRECAUTIONS

To ensure the best from the product, please read all instructions carefully before using the device. Save this manual for further reference.

- Unpack the equipment carefully and save the original box and packing material for possible future shipment.
- Follow basic safety precautions to reduce the risk of fire, electrical shock and injury to persons.
- Do not dismantle the housing or modify the module. It may result in electrical shock or burn.
- Using supplies or parts not meeting the products' specifications may cause damage, deterioration or malfunction.
- Refer all servicing to qualified service personnel.
- To prevent fire or shock hazard, do not expose the unit to rain, moisture or install this product near water.
- Do not put any heavy items on the extension cable in case of extrusion.
- Do not remove the housing of the device as opening or removing housing may expose you to dangerous voltage or other hazards.
- Install the device in a place with fine ventilation to avoid damage caused by overheating.
- Keep the module away from liquids.
- Spillage into the housing may result in fire, electrical shock, or equipment damage. If an object or liquid falls or spills on to the housing, unplug the module immediately.
- Do not twist or pull by force ends of the cable. It can cause malfunction.
- Do not use liquid or aerosol cleaners to clean this unit. Always unplug the power to the device before cleaning.
- Unplug the power cord when left unused for a long period of time.
- Information on disposal for scrapped devices: do not burn or mix with general household waste, please treat them as normal electrical wastes.

Table of Contents

1. Product Introduction.....	1
1.1 Features	1
1.2 Packing List	2
1.3 Customer Service	2
2. Specification	3
3. Panel Description.....	4
3.1 Front Panel.....	4
3.2 Rear Panel.....	4
4. System Connection.....	5
5. Panel Drawing	6

1. Product Introduction

Thanks for choosing the VC-C101U-ETH USB-C to HDMI converter. This converter is designed to convert 4K@60Hz 4:4:4(max) DisplayPort alt mode signal over USB-C video input to 4K@60Hz 4:4:4(max) HDMI 2.0 video output. The USB-C input interface also supports simultaneous USB 3.2 Gen1 data transfer, Gigabit LAN and 100W fast-charging power delivery.

The converter includes three USB 3.2 Gen1 device ports and one Ethernet Gigabit LAN port.

1.1 Features

- Input supports 2 lane DisplayPort Alt mode up to 4K@60Hz 4:4:4 HBR3 (HBR2 is limited to 4K@30Hz 4:4:4).
- Output supports HDMI 2.0, 4K@60Hz 4:4:4.
- HDCP 2.3/1.x support.
- USB-C input supports 100W USB Power Delivery.
- 3x USB 3.2 Gen1 (5Gbps) device ports for USB peripherals such as USB cameras, keyboard and mouse.
- Each USB device port can deliver up to 5V1A (5W) power.
- Supports auto-switching USB devices downstream.
- Ethernet Gigabit LAN pass-through via USB-C.
- No software drivers required - Plug and Play.

USB-C to HDMI2.0 converter with USB and Ethernet

1.2 Packing List

- 1x VC-C101U-ETH
- 2x Mounting Ears with 4 Screws (Attached by default)
- 4x Plastic Cushions
- 1x Power Adapter (DC 24V/6.25A) (UK and EU cable)
- 1x User Manual

Note: Please contact your distributor immediately if any damage or defect in the components is found.

1.3 Customer Service

TiGHT AV provide limited warranty for the product within **five years** counting from date of purchase (The purchase invoice shall prevail).

For more information see TiGHT AV general Warranty Statement at <https://tightav.com/warranty-statement> or just scan the QR-code below



USB-C to HDMI2.0 converter with USB and Ethernet

2. Specification

Video Input	
Input	(1) 2-lane DisplayPort alt mode, DisplayPort 1.4
Input Connector	(1) USB-C
Input Resolution	Up to 4K@60Hz 4:4:4 (HBR3, 8.1Gbps)
Video Output	
Output	(1) HDMI
Output Connector	(1) Female type-A HDMI
HDMI Output Resolution	Up to 4K@60Hz 4:4:4 (18Gbps)
HDMI Standard	2.0b
HDCP Version	2.3/1.x compliant
USB	
Connector	(3) USB-A, (1) USB-C
USB Standard	(3) USB-A: USB 3.2 Gen 1, 5V1A External Power Supply (1) USB-C: USB 3.2 Gen 1, DisplayPort Alt mode, 100W PD
Ethernet	
Standard	10/100/1000Base-T
General	
Bandwidth	18Gbps
Operation Temperature	-10 ~ +55°C
Storage Temperature	-25 ~ +70°C
Relative Humidity	10% - 90%
Power Supply	Input: 100V~240V AC; Output: 24V DC 6.25A
Power Consumption	143W(Max)
Dimension (W*H*D)	145mm x 22mm x 80mm
Net Weight	290g
Compliance	FCC, CE
Environmental Compliance	RoHS, REACH, WEEE

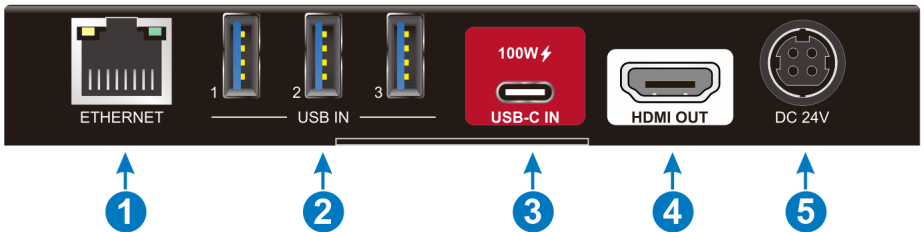
3. Panel Description

3.1 Front Panel



- ① **Power LED:** The LED illuminates green when power is applied.
- ② **CHARGING:** The LED illuminates green when USB-C is charging an external device.

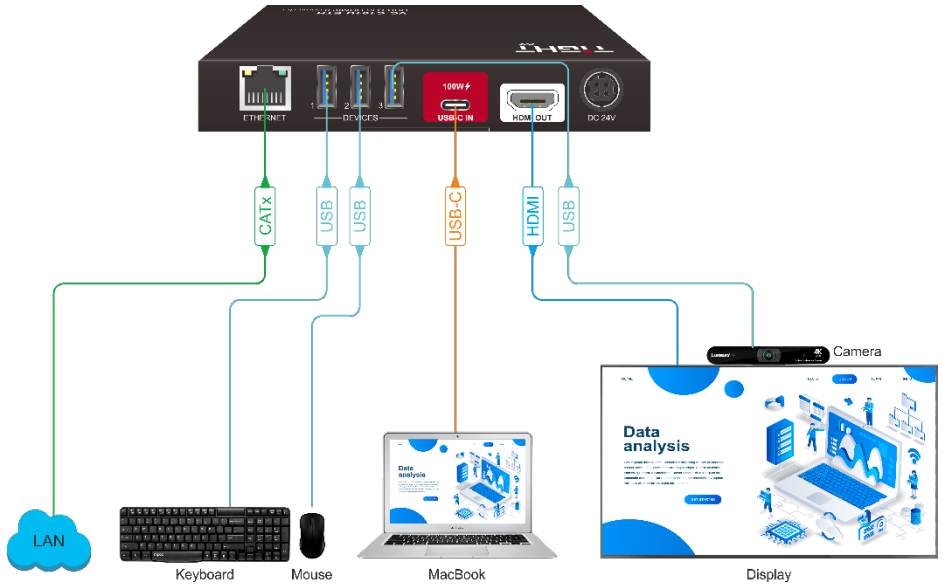
3.2 Rear Panel



- ① **ETHERNET:** 1x RJ45 port, connect to Ethernet.
- ② **USB IN:** 3x USB 3.2 Gen1 device ports for camera, keyboard and mouse.
Note: The USB power of the device ports will follow the host. When no host device is connected the device ports will not supply power.
- ③ **USB-C IN:** 1x USB-C port, connect to video source.
- ④ **HDMI OUT:** 1x HDMI-A port, connect to HDMI display.
- ⑤ **DC 24V:** DC barrel port to connect a power adapter.

USB-C to HDMI2.0 converter with USB and Ethernet**4. System Connection**

The following diagram illustrates typical input and output connections that can be utilized with the VC-C101U-ETH:



5. Panel Drawing





6. Environment and recycle information



6.1 Disposal of electric and electronic devices EC Directive 2012/19/EU

This product is not to be treated as regular household waste but must be returned to a collection point for recycling electric and electronic devices. Further information is available from your municipality, your municipality's waste disposal services, or the retailer where you purchased your product.

6.2 Packaging recycling information

	<p>SCATOLA CORRUGATED PAPER BOX</p>	<p>RACCOLTA CARTA MIXED PAPER AND CARD</p>
	<p>PIATTINA ANIMATA CABLE TIE</p>	<p>RACCOLTA CARTA MIXED PAPER AND CARD</p>

*Verifica le disposizioni del tuo comune
Check the regulations of your municipality*

Note: This manual is recycled as paper (mixed paper and card).

